

# Water & Wastewater Market Solutions



HIGH PERFORMANCE COMPOSITE SOLUTIONS



*Building the World to Last®*



*Together, we will make your vision a reality.*

# Fibergrate in Water & Wastewater

## Introduction

Fibergrate Composite Structures Inc. is a global manufacturer of Glass Reinforced Plastic (GRP) products for industrial and commercial use. Fibergrate sets the standard for high performance composite products with such proven brands as Fibergrate® moulded grating, Safe-T-Span® pultruded grating, Dynarail® railing and ladder systems, and Dynaform® structural shapes. Fibergrate offers turnkey design, manufacturing and fabrication services. With the recent addition of new products for the water/wastewater market including scum baffles, troughs, launder covers, density current baffles, baffle walls and weir plates, Fibergrate stands ready to be your complete solutions provider for your water treatment needs.

Within the water and wastewater market; corrosion resistance, safety and maintenance requirements are critical considerations. For five decades, Fibergrate has met the challenges of the harsh environmental conditions found in the water and wastewater market with its wide selection of GRP products. Key product features such as corrosion resistance, slip resistance, UV resistance, flame-retardancy, non-conductivity, impact absorption and low maintenance requirements make these products ideal for use in all types of water/wastewater facilities. Fibergrate can also provide your facility with GRP products that are NSF Rated for Potable Water Contact.

Fibergrate's GRP products offer superior resistance to corrosive water, acids, alkalis and other chemical compounds. The result is minimal maintenance requirements, a long service life and a lower life cycle cost than ferrous metals and aluminum. Today, Fibergrate products can be found in all phases of potable water and wastewater treatment facilities including filtration, water and chemical storage facilities, and collection and treatment areas.



## Applications



- Tank & equipment access platforms
- Handrails at basins, clarifiers, etc.
- Elevated platforms & walkways
- Air intake access & safety
- Weir plates & scum baffles
- Filter media support grids & structures (Biofilter, trickling filters, etc.)
- Ladders & safety cages - Inside & outside of tanks & pits
- Trench & vault covers (Up to H-20 truck traffic)

# Fibergrate Benefits



**Corrosion-Resistant:** Numerous resin systems are available to provide the corrosion resistance required to meet specific needs in varying water and wastewater treatment processes.



**Slip-Resistant:** The meniscus and integrally applied grit surfaces of Fibergrate grating products have unmatched slip resistance for improved worker safety.



**Electrically & Thermally Non-Conductive:** Fibreglass is electrically non-conductive for safety and has low thermal conductivity which results in a more comfortable product when physical contact occurs.



**Low Maintenance:** The corrosion-resistant properties of Fibergrate products reduce or eliminate the need for sandblasting, scraping and painting.



**UV-Resistant:** Fibergrate's GRP gratings are formulated for maximum UV resistance and a special coating is available for increased UV resistance on railing and ladder systems.



**Fire-Retardant:** Most Fibergrate products are engineered to have a flame spread rating of 25 or less, as tested in accordance with ASTM E-84, and meet the self-extinguishing requirements of ASTM D-635.



**Impact-Resistant:** GRP can withstand major impacts with negligible damage. Gratings are available to satisfy even the most stringent impact requirements.



**High Strength to Weight Ratio:** Less than one-half the weight of steel grating, GRP allows easy removal for access below floor level and installation with less manpower.

**Easily Fabricated:** Can be cut using circular or reciprocating saws with abrasive blades.

**Engineering and Drafting:** WTP/WWTP projects require sealed drawing and calculations. Utilizing Fibergrate's 50+ years experience and engineering directed by a Professional Engineer can save time and money from concept to completion.



## NSF® Standard 61-Certified GRP Products:

Fibergrate offers a line of pultruded and moulded GRP products that have been certified to NSF Standard 61 for potable water contact. These include Dynaform® structural shapes, Dynarail® ladder and railing systems, as well as specially formulated moulded grating. This moulded grating uses an isophthalic and vinyl ester resin formulation, and is the only moulded grating available with NSF Standard 61 certification.



**SAFE**

## Heavy Metal Safe:

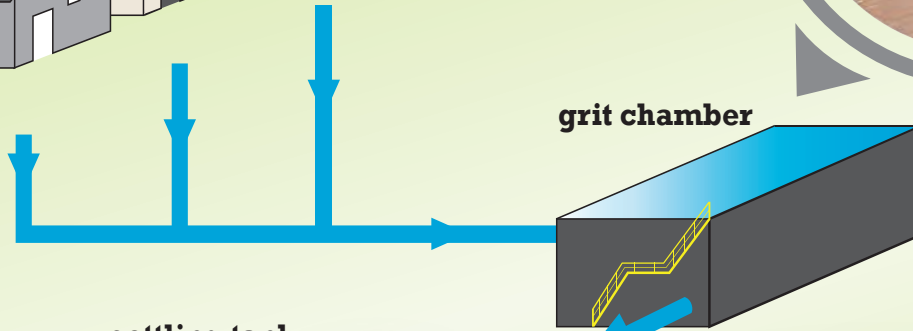
The EPA, OSHA and other regulatory agencies created to protect our lives and our natural resources have increased legislation to control heavy metals such as lead, chrome, cadmium and other metals in all products where exposure is a health threat. Fibergrate Composite Structures Inc. supports this strengthened legislation and has, for more than 20 years, voluntarily tested for heavy metals in our products and minimized or eliminated heavy metals from our products.

**GRP vs. Steel:** When comparing the price of Fibergrate Glass Reinforced Plastic (GRP) to metallics, consider:  
**Value = Price / Service Life**

| Cost Factor                    | Traditional Metallic Materials  | The Fibergrate® Advantage  |
|--------------------------------|---|--|
| Safety Cost                    | Slips and falls are the second leading cause of industrial accidents and one of the leading causes of death. Each lost work day can lead to a significant cost.   | Fibergrate's slip-resistant surface dramatically reduces accidental slips making it the most cost-effective solution for minimizing worker accidents and lost workdays.  |
| Initial Installation Cost      | Up front, metallic components appear to be the most economical, based on material cost alone. However, metallic materials require heavy lifting equipment, added labour for cutting, welding and painting, and grating must be "edge-banded". | Although initial material investment may appear higher, don't be fooled! GRP products require no heavy lifting equipment, minimal labour, are easily fabricated with hand tools, do not need painting, and grating requires no edge-banding. |
| Maintenance & Replacement Cost | In highly corrosive WTP/WWTP installations, metallic products often require intensive maintenance and can deteriorate in a few years or less, requiring numerous replacements within the facility life.                                       | Fibergrate GRP products will last much longer and require little maintenance. Fibergrate systems pay for themselves after one maintenance cycle. Many Fibergrate WTP/WWTP installations have been in service for 30+ years.                  |

# Fibergrate Solutions

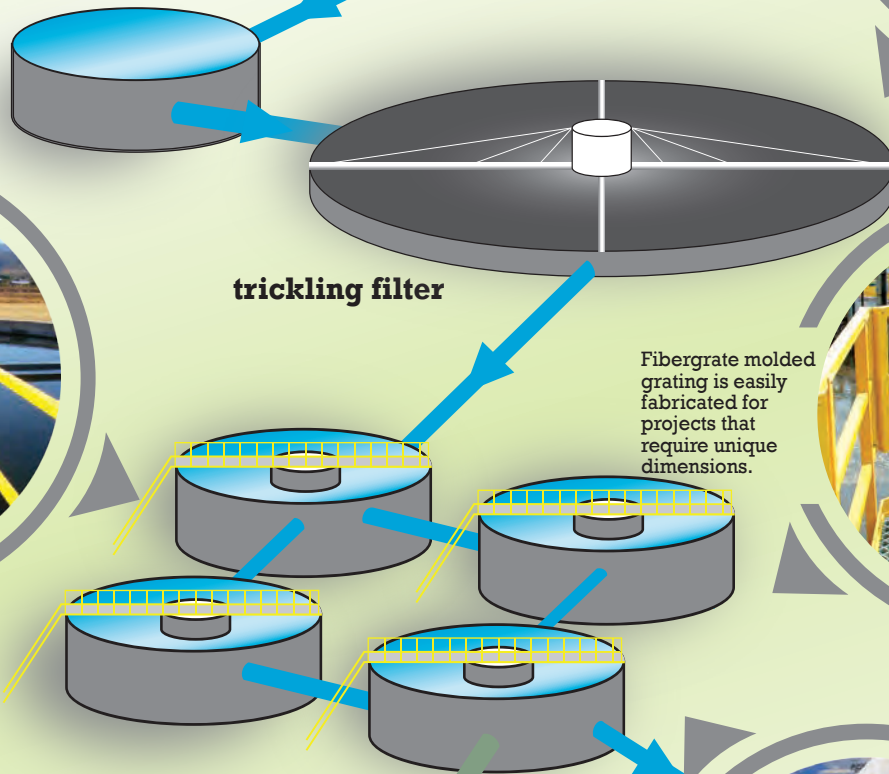
See how Fibergrate can provide a complete solution for your treatment facility -



settling tank

grit chamber

trickling filter



clarifiers

digester tanks

Fibergrate's stairway systems and platforms are engineered to meet your specific requirements.



Trickling filters can be covered with Fibergrate® molded grating or Safe-T-Span® pultruded grating, used for filter media support grids.



Fibergrate's FRP handrail and walkways can be used on and around clarifier tanks.



Fibergrate molded grating is easily fabricated for projects that require unique dimensions.



Dynarail® ladders, handrail and Fibergrate® grating walkways can make tanks safer and easier to access.

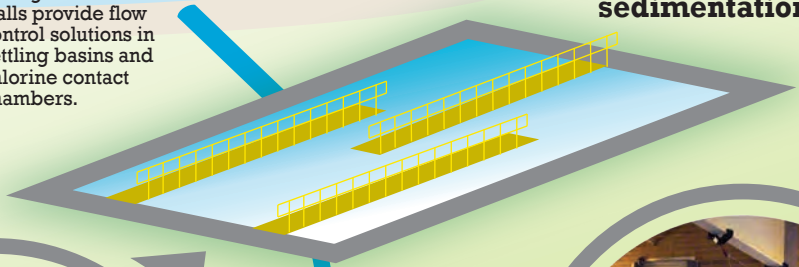
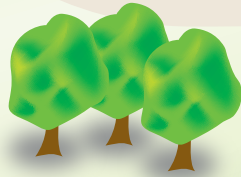


Fibergrate's weir plates and scum baffles are custom designed for each project.



Fibergrate's baffle walls provide flow control solutions in settling basins and chlorine contact chambers.

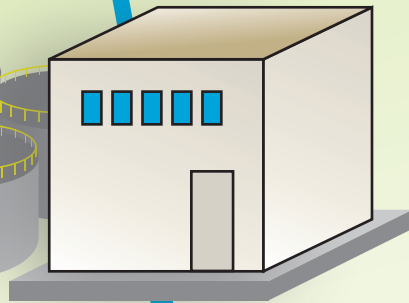
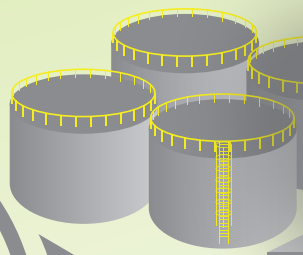
### sedimentation basin



Our handrail systems and gratings are used throughout sedimentation basins.



Custom product solutions, such as this retractable stairway system, can make your facility more efficient and safe.

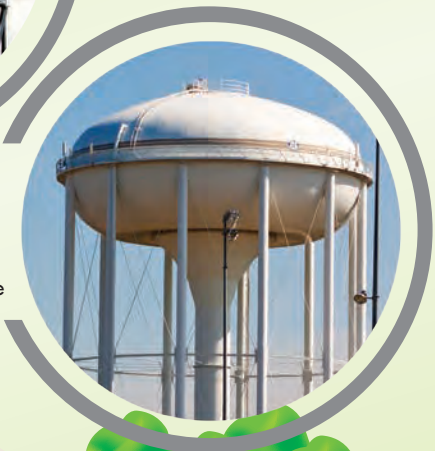


### treatment plant

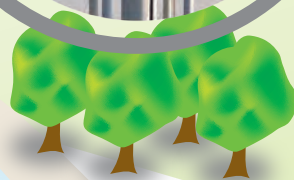
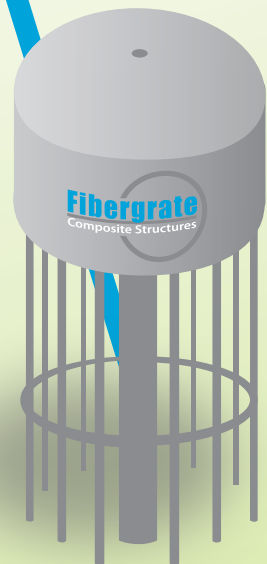
Our stairway systems, made of all-FRP materials, can be used to access tanks.



Water towers can be outfitted in Fibergrate FRP walkways, handrail and ladders to reduce maintenance and increase safety.



### water tower



# Product Solutions

## Fibergrate® Moulded Grating



- Maximum corrosion resistance
- Used for walkways or flooring
- Exceptional slip resistance with 2 non-slip surface options
- Variety of depths and panel sizes

## Safe-T-Span® Pultruded Grating



- High unidirectional strength and stiffness for longer spans
- Used for non-slip walkways and flooring
- Superior corrosion resistance compared to metal gratings

## Covered Moulded Grating



- Odour control solution
- Consists of a gritted plate cover secondarily affixed to a moulded grating panel
- Can be used for walkways over tank tops and vats
- Offers maximum corrosion resistance

## Fiberplate® Gritted Floor Plate



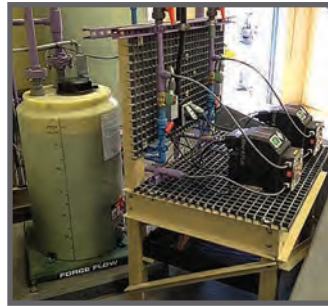
- Installs on traditional surfaces for slip resistance
- Solid composite panel; excellent for odour control
- Corrosion-resistant and lightweight
- Non-porous surface allows for easy cleaning

## Dynaform® Structural Shapes



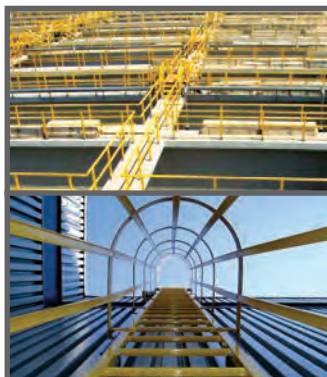
- High strength and durability; can withstand corrosive applications
- Thermal & electric non-conductivity
- Can be coated for maximum UV resistance
- Custom shapes available

## Metering Pump Stands



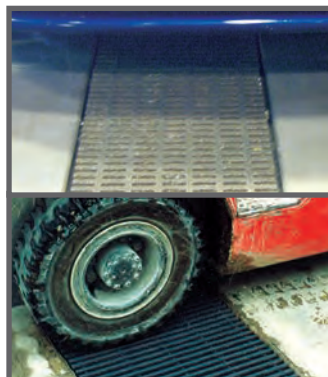
- Options of 1- 4 bays; floor or wall-mounted with no back, moulded grating back, or 1/4" plate back
- Easy installation, corrosion-resistant and lightweight
- Optional drip pans and pump mount kits available

## Dynarail® & DynaRound™ Railing & Ladder Systems



- Superior corrosion resistance & thermally non-conductive
- Lightweight for easy & cost effective installation
- Can be coated for maximum UV resistance
- Dynarail guardrail utilizes 1-3/4" x 1/8" pultruded square tubes
- DynaRound is composed of 1.9" O.D. pultruded tubes

## High Load Capacity (HLC) Moulded & (HI) Pultruded Grating



- Engineered to withstand forklift & tractor trailer loads
- HLC moulded grating has a unique one piece construction with depth options of 1-1/2" & 2"
- HI pultruded grating has high unidirectional strength; depths of 1", 1-1/2", 2", 2-1/2" & 3"
- Used for trench covers, flooring, & ramps in loading docks and storage areas

# Product Solutions

## Scum Baffles



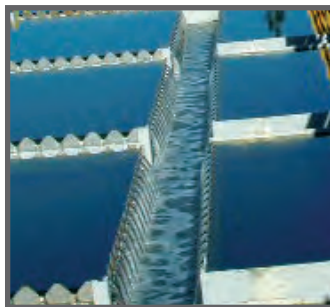
- Available in a variety of configurations
- Provided with accessories such as splices and support brackets
- Resistant to corrosive environments

## Laundry Covers



- Odour control
- Prevention of algal growth
- Keeps debris out of launders
- Custom designed in a variety of configurations

## Troughs



- Custom designed in a variety of sizes and configurations
- Built to meet AWWA F101 specifications when required
- Available in a variety of corrosion-resistant resins

## Density Current Baffles



- Improves clarifier performance
- Provided with support brackets and splices
- Easy to install
- Corrosion-resistant

## Weir Plates



- Available in a variety of configurations
- NSF-61 approved resin system available
- Corrosion-resistant
- Provided with accessories such as splices and washers

## Baffle Walls



- Corrugated design with sloped surfaces
- NSF-61 approved resin system available
- Low cost, rapid installation
- High strength to weight ratio

## Stair Solutions: Moulded & Pultruded Stair Treads, Stair Tread Covers, Covered Treads, Stairway Systems



- Treads available in moulded or pultruded configuration
- Superior slip resistance compared to metal stairs, especially in wet conditions
- Tread covers install easily over existing treads and provide added slip resistance



- Stairway systems are engineered to meet your specific requirements
- Stairways are complete with GRP structure, railings and stairs
- All stair solutions are lightweight and easy to install

# Case Studies

## Bowery Bay



### Project Info

- Custom Fabricated GRP Hoods
- Fibergrate® Moulded Grating
- Dynaform® Structural Shapes
- Dynarail® Railings

The Bowery Bay facility was due for some renovations and upgrades to existing buildings. Fibergrate designed and fabricated GRP sodium hypochlorite hoods for the facility. This unique design integrated walkways to adjoin with the spray hoods for stabilization and resistance of coastal winds at the plant. Dynaform® structural shapes were used in the design of the hood and were used to support the pedestrian walkways. The walkways were constructed of Fibergrate® moulded grating to provide slip resistance for workers, with Dynarail® railing on one side of each walkway for additional safety. The customer was pleased with the functionality in the design of these hypochlorite hoods and walkways that will withstand corrosion and require little maintenance for years to come.

## City of Wichita



### Project Info

- Safe-T-Span® Pultruded Grating
- Safe-T-Span® Pultruded Stair Treads
- Dynaform® Structural Shapes
- Dynarail® Three-Rail Guardrail

The City of Wichita chose to upgrade its water treatment facility with a safe, durable product that will protect against costly corrosion and provide a slip-resistant surface for workers. Fibergrate's VEFR Safe-T-Span® pultruded grating and stair treads were chosen to replace steel in several sump areas, on stairways and on two access platforms. The access platforms also incorporated Fibergrate's Dynaform® structural shapes and a Dynarail® three-rail guardrail, engineered to meet the city's requirements. The operations manager of the facility was pleased with the appearance of the product and stated that not only do the Fibergrate products handle the cold winters well, but also continue to thrive in the corrosive conditions.

## Fort Wayne Hill



### Project Info

- Fibergrate® Moulded Grating
- Dynaform® Structural Shapes
- Dynarail® Handrail
- Fibertred® Stair Treads

The Fort Wayne Hill Water Resources Centre in Buford, Georgia, was designed to meet the wastewater treatment and sanitary needs of Gwinnett County. Fibergrate was chosen to construct a large GRP (Glass Reinforced Plastic) structure for support and access at this facility. Dynaform® structural shapes were used for the main support structure. The flooring surfaces were constructed using Fibergrate® moulded grating, creating a safe walking surface for workers. Dynarail® railings were used for added safety throughout the facility, along with Fibertred® moulded stair treads for access. The client was impressed with the outcome, which met all their requests and needs.



# Case Studies

## San Miguel Cuyultán



### **i** Project Info

- Dynarail® Railings
- Fibergrate® Moulded Grating
- Dynaform® Structural Shapes
- Custom Shapes

The city of San Miguel Cuyultán in Jalisco, Mexico, needed GRP (fibreglass reinforced plastic) products for this project due to the corrosion-resistant properties these products offer. This facility experiences high exposure to sulphur vapours and chose Fibergrate for its durability and corrosion resistance along with its low maintenance features. Fibergrate provided Dynarail® railings, platforms utilizing Fibergrate® moulded grating, stair treads, and Dynaform® structural components to cover the different necessities of the treatment facility. As a result of the success of the project and Fibergrate's products, the State of Jalisco's government has decided to use Fibergrate for the rest of the wastewater treatment plant projects in the state, as well as in the nearby state of Sinaloa.

## Ogden City



### **i** Project Info

- Fibergrate® Moulded Grating
- Dynaform® Structural Shapes
- Dynarail® Railings
- Fibertred® Stair Treads

The Ogden water treatment plant was originally constructed in the mid-1950s with some expansions and improvements implemented in the 1970s. A couple of decades later, the plant was completely rehabilitated and Ogden City's Water District chose Fibergrate to design a custom, retractable staircase using Fibergrate® moulded grating, Fibertred® moulded stair treads, Dynarail® railings and Dynaform® structural shapes. The staircase provides safe access to settling pits at this Utah filter plant, and it retracts to prevent disturbances of the scum blankets when the pits are full. Fibergrate was able to fully understand the customer's requirements which resulted in the creation of a unique application that met and satisfied their specific needs.

## Pumping Station



### **i** Project Info

- Fibergrate® Moulded Grating
- Dynaform® Structural Shapes
- Dynarail® Railings
- Fibertred® Stair Treads

The Thickson Road Pumping Station located in Whitby, Ontario, Canada, is a multi-million dollar project designed to meet the water needs and requirements of the city. The customer was looking for slip-resistant and corrosion-resistant platforms and walkovers to complete this state-of-the-art facility. Fibergrate was chosen to provide Fibergrate® moulded grating, Fibertred® stair treads, Dynarail® railing systems, and Dynaform® structural shapes to create platforms and walkways at the water pumping station. With the ease of installation and fabrication of Fibergrate products, the crossovers and platforms fit well over the existing pipes. The design is functional and will require little maintenance for many years.

# The Only Complete Water Treatment Solution

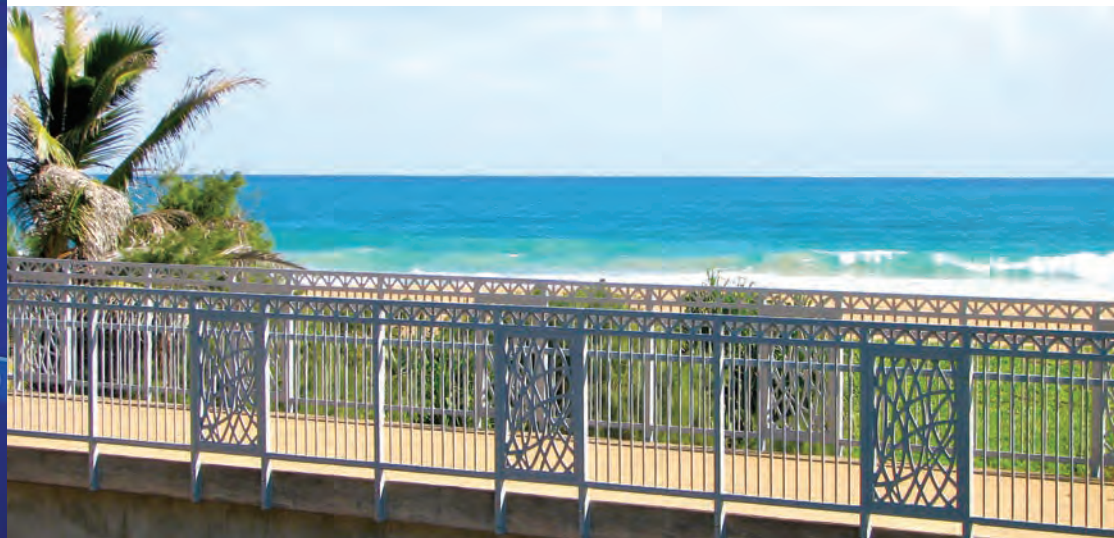




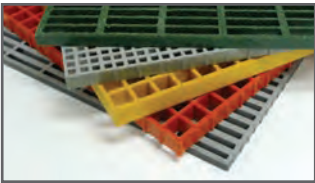
## Other Market Solutions



**At Fibergrate, we are building  
the world to last.**



# Fibergrate Products & Services



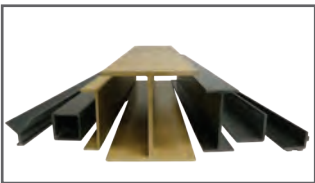
## Fibergrate® Moulded Grating

Fibergrate® moulded gratings are designed to provide the ultimate in reliable performance, even in the most demanding conditions. Fibergrate offers the widest selection in the market with multiple resins and more than twenty grating configurations available in many panel sizes and surfaces.



## Safe-T-Span® Pultruded Industrial & Pedestrian Gratings

Combining corrosion resistance, long-life and low maintenance, Safe-T-Span® provides unidirectional strength for industrial and pedestrian pultruded grating applications.



## Dynaform® Structural Shapes

Fibergrate offers a wide range of standard Dynaform® pultruded structural profiles for industrial and commercial use, including I-beams, wide flange beams, round and square tubes, bars, rods, channels, leg angles and plate.



## Dynarail® & DynaRound™ Guardrail, Handrail & Ladder

Easily assembled from durable components or engineered and prefabricated to your specifications, Dynarail® square tube and DynaRound™ round tube railing systems and Dynarail® safety ladder systems meet or exceed OSHA and strict building code requirements for safety and design.



## Custom Composite Solutions

Combining Fibergrate's design, manufacturing and fabrication services allows Fibergrate to offer custom composite solutions to meet our client's specific requirements. Either through unique pultruded profiles or custom open moulding, Fibergrate can help bring your vision to reality.



## Design & Fabrication Services

Combining engineering expertise with an understanding of fibreglass applications, Fibergrate provides turnkey design and fabrication of fibreglass structures, including platforms, catwalks, stairways, railings and equipment support structures.



## Worldwide Sales & Distribution Network

Whether a customer requires a platform in a mine in South Africa to grating on an oil rig in the North Sea, or walkways in a Wisconsin cheese plant to railings at a water treatment facility in Brazil; Fibergrate has sales and service locations throughout the world to meet the needs and exceed the expectations of any customer.

Fibergrate Composite Structures Inc. believes the information contained here to be true and accurate. Fibergrate makes no warranty, expressed or implied, based on this literature and assumes no responsibility for the consequential or incidental damages in the use of these products and systems described, including any warranty of merchantability or fitness. Information contained here can be for evaluation only. The marks and trade names appearing herein, whether registered or unregistered, are the property of Fibergrate Composite Structures Inc.



©Fibergrate Inc. 2024 Part No. 881129.UK  
Printed in the USA